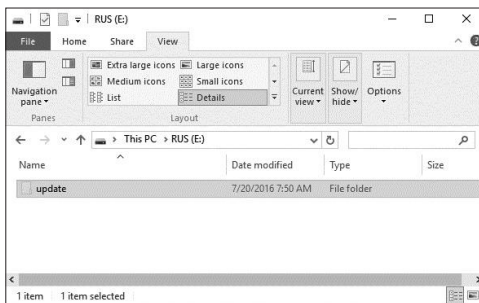


CONSOLE FIRMWARE UPDATE

- 1 . Unzip the “*Update.zip*” file
- 2 . Copy the unzipped “*Update*” folder to the USB mass storage driver .

Important note:

- The USB mass storage driver should be **FAT32** format
- The “*Update*” folder must be the USB mass storage driver’s root directory)



- 3 . Disconnect the main console’s DC power from the power outlet. Plug the USB mass storage driver to the USB socket on the backside of the main console .



- 4 . Reconnect the main console’s DC power to start the firmware update process.
- 5 . During the update process the status LED on the bottom side will flash red light.
- 6 . Once the update complete, the main console will restart and the status LED will return to blue light and connect to your previous connected router .
- 7 . Remove the USB mass storage driver form the main console .

Important note:

- The USB port is for firmware update only.
- Please keep connect the power during the firmware update process.
- Please do not press any button during the firmware update process.
- During the update process, do not remove the USB mass storage driver.
- If the firmware update still not starts, you can try to press the reset key to trigger the update process .
- During firmware update process, the Wi-fi will be disable until the update success, it will reconnect to your Wi-fi router and upload the data automatically. If the console cannot connect to your route, you need to re-enter the router and Wunderground connection information and set time server in the setup UI again .